

**Canon**

 **imagePROGRAF®**  
**iPF9100/8100**

**iPF9100/8100**

**GRAPHIC ARTS**

**LARGE-FORMAT PRINTING**



“I simply love to be in control of my images from their inception to presentation.”

–Ryszard Horowitz, Print Master



With the imagePROGRAF iPF9100/8100 large-format printers, you can express your creativity—oversized and uncompromised.

Now you can bring your biggest, most ambitious projects from inspiration to realization with uncompromised accuracy, extraordinary detail, and spectacular color. Built to put advanced printing technologies into the hands of artists and photographers, the new 60" iPF9100 and 44" iPF8100 printers will help you fulfill your creative potential like never before.



Photo credit: ©Ryszard Horowitz

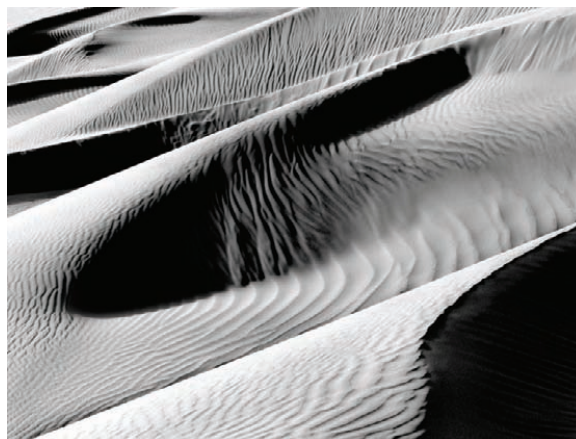


Photo credit: ©Vinny Isola



# iPF9100/8100

## FEATURES



Canon digital imaging expertise, breakthrough color science, and sophisticated printing technologies are seamlessly integrated to help you achieve magnificent results.

iPF9100 60" large-format printer

iPF8100 44" large-format printer

### A BROAD PALLET OF 12 COLORS

- A wide gamut for vibrant colors, subtle mid-tones, smooth gradations, and fine details
- Four monochromatic shades deliver dramatic contrast and truer gray tones.

### LUCIA™ PIGMENT INKS

- Color stable, light-fast, and water-resistant
- Reformulated monochromatic inks reduce graininess, resist scratches, and minimize bronzing.



Available 700ml ink tanks

### ULTRA-HIGH-QUALITY IMAGING

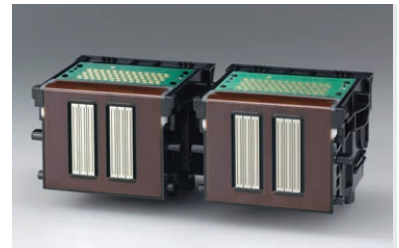
- High-resolution output, up to 2400 x 1200 dpi with tiny 4pl droplets of ink
- Built-in calibration for consistent, reliable results

### MAXIMUM PRODUCTIVITY

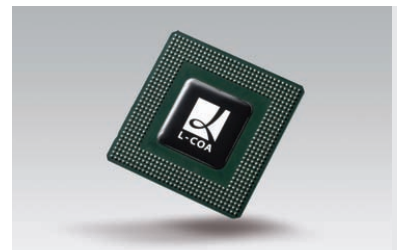
- Borderless printing reduces trimming time
- Two 1.07" print-heads, with a total of 30,720 nozzles
- Built-in 80GB hard drive for data storage and faster reprints
- The sub-ink tank system enables on-the-fly ink replacement

### SOFTWARE SOLUTIONS

- Print Plug-in for Digital Photo Professional
- Print Plug-in for Adobe® Photoshop®
- Digital Photo Front-Access
- Canon Printer Driver 2007
- PosterArtist 2007 (optional)



Two print-heads



L-COA Processor

“The essence of nature photography is to capture color, detail, and form, that engage and inform the viewer.”

–George Lepp, Print Master

#### AN EXTRAORDINARY SPECTRUM OF COLOR

Equipped with a pallet of 12 colors that includes Cyan, Photo Cyan, Magenta, Photo Magenta, Yellow, Red, Green, and Blue, plus four monochromatic shades–Black, Matte Black, Gray, and Photo Gray–these printers deliver a broader gamut for greater tonal range and more precise reproduction of color.

• **Red, Green, and Blue:** These colors expand the color space while significantly improving saturation level for the additive primary colors.

• **Photo Cyan, Photo Magenta, Gray, and Photo Gray:** These colors help smooth color transitions, reduce graininess, and maintain a neutral gray balance for better overall image quality.

• **Four Monochromatic Shades:** A greater black-to-white tonal range is enabled for more dramatic light-to-dark contrast and better mid-tone clarity. Black density on coated and uncoated media is optimized because the printer will automatically select the appropriate Black ink based on the type of media being used.



Photo credit: ©George Lepp

“The beautiful smooth color gradations let me replicate the style of the ‘old masters’ like never before!”

–Fay Sirkis, Print Master

**ARCHIVAL LUCIA INKS**

Canon’s advanced ink technologies give LUCIA pigment inks outstanding archival characteristics. Each pigment particle is protected by a special polymer compound coating. This coating increases the ink’s resistance to

fading to extend the longevity of a printed image. The polymer also helps the ink to adhere more evenly and securely across the surface of the media to reduce graininess, resist scratching, and minimize bronzing—so prints look great from every angle.



Art by: ©Fay Sirkis



# Workflow solutions to help bring your creative vision to fruition

Canon workflow solutions simplify printer operation and expand the creative options for large-format photography and fine art applications.\*

- **Print Plug-in for Adobe Photoshop** for enhanced 16-bit image processing from Photoshop.
- **Print Plug-in for Digital Photo Professional** facilitates printing from digital cameras.
- **Digital Photo Front-Access** displays file images and provides a link to other software applications for editing and printing.
- **Canon Printer Driver 2007** optimizes productivity with easy and advanced settings.
- **PosterArtist 2007** (optional) is an easy-to-use, template-driven poster creation tool.

## SEAMLESS CAMERA-TO-PRINT WORKFLOW

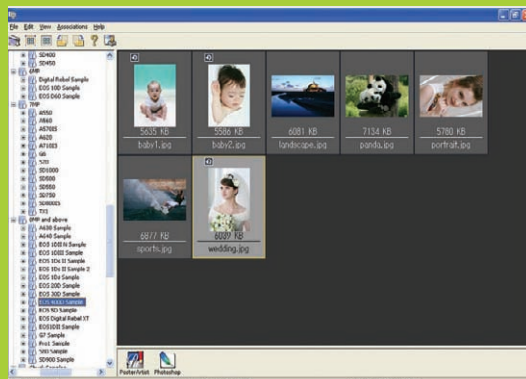
Shoot with a Canon EOS® Digital SLR camera and take full advantage of the wider Adobe RGB color space enabled by the included software and the 12-color LUCIA ink system.

## 16-BIT IMAGE PROCESSING

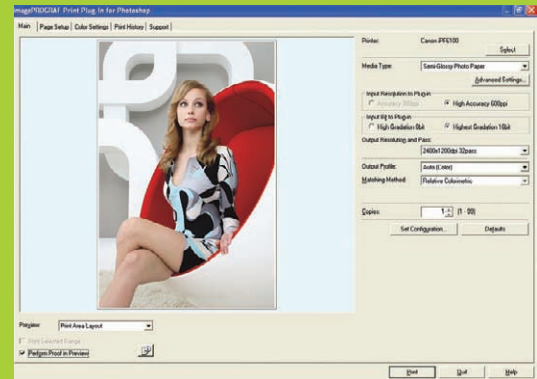
Print Plug-ins for Adobe Photoshop and Digital Photo Professional support high-bit depth workflows and 16-bit image processing to virtually eliminate problems such as posterization and banding.

## EXTENSIVE RIP SUPPORT

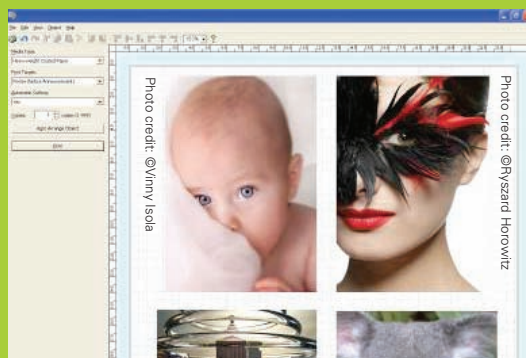
A wide range of compatible third-party RIPs and software solutions are available from approved Canon Alliance Partners. To learn more about available RIP solutions, visit [www.usa.canon.com/alliance](http://www.usa.canon.com/alliance).



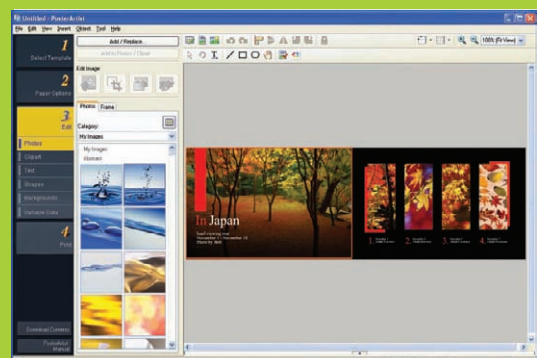
Digital Photo Front-Access



Print Plug-in for Photoshop



Free Layout



PosterArtist 2007

\*Please see specifications page for OS compatibility.

# “Show big, sell big. Let your needs, not the limitations of your printer, dictate size.”

–Bruce Dorn, Print Master

## **ENGINEERED FOR EXCELLENCE**

Driving data to the iPF9100 and iPF8100 printers and optimizing print functions is Canon’s advanced L-COA Processor. This high-speed processor intelligently manages print data and directs the high-density print-heads to deposit ink with unprecedented speed. This unique processor helps ensure that complex graphics and color-intensive photographic images are optimized for clarity, richness, and accuracy.

Canon’s L-COA processor channels output through two one-inch print-heads, each with 2,560 nozzles per color for a total of 30,720 nozzles. Superfine 4pl ink droplets and print resolutions of up to 2400 x 1200 dpi produce the delicate color gradation and the high-definition expression required by fine art applications and professional photographers.

## **HIGH-CAPACITY 80GB HARD DRIVE**

Increased hard drive storage space at the printer increases productivity by relieving workload from the host computer. The large hard drive provides more capacity for print job data storage and retrieval so multiple copies and reprints can be made without resending the print files.

## **SYSTEM CALIBRATION—SIMPLIFIED**

Unlike the complex and time-consuming calibration normally required in professional settings, Canon offers a simplified process that enables easy recalibration back to the original, optimal factory settings across all the printer’s media types—in just minutes.



Photo credit: ©Bruce Dorn, IDC Photography

“Being able to print accurate and punchy colors, deep blacks and rich skin tones in record speed for a client is a sales tool in and of itself.”

–Stephen Eastwood,  
Print Master

#### **KYUANOS: CANON'S NEXT-GENERATION COLOR-MATCHING PLATFORM**

*Kyuanos* is a new high-precision color-matching engine developed by Canon. This underlying technology enables advanced color management functions, such as Ambient Light Adjustment,\* and supports richer color expression across a wider spectrum of input and output formats.

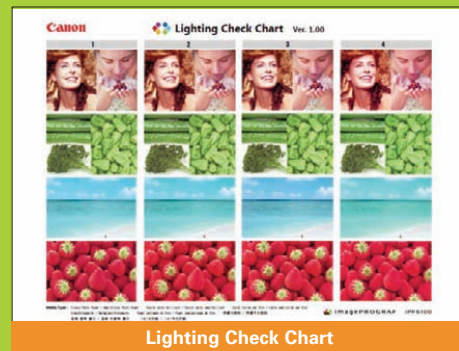


Photo credit: ©Stephen Eastwood

\*For selected media





# Achieve magnificent results

Every aspect of these imagePROGRAF printers has been engineered for the production of ultra-high-quality large-format images.

## **PHOTOGRAPHY**

Canon, a world leader in digital photography, has included with these printers the essential tools and technologies needed to produce exceptional photo enlargements. The Print Plug-in for Digital Photo Professional helps to edit, organize, and layout digital photos for large-format applications. The Print Plug-in for Adobe Photoshop enables 16-bit image processing to dramatically improve gradations and image quality. The system's wide color gamut and durable LUCIA inks produce realistic images with richer, deeper tones that will last for years to come.

## **FINE ART REPRODUCTIONS – GICLÉE**

When creating exact reproductions, the imagePROGRAF printer's high-resolution of up to 2400 x 1200 dpi output and precise placement of superfine 4pl droplets of ink mean that museum-quality images can be printed with absolute confidence. The 12-color ink set provides an unprecedented color spectrum to ensure prints are faithful to the artist's original.

## **GO AHEAD, BE AMBITIOUS, IT'S TIME TO START THINKING BIG!**

Wall murals, atrium ceiling banners, lobby displays—now you can fill large, empty spaces with art! A broad selection of media options and advanced color management features, such as Ambient Light Adjustment, will help you to achieve results that are nothing less than spectacular!



Photo credit: ©Parker Pfister







# iPF9100/8100

## SPECIFICATIONS

### Print-Heads

PF-03 (2)

### Technology

FINE (Full-photolithography Inkjet Nozzle Engineering)

### Configuration

Two Print-Heads  
Print-Head (L) Y/PC/C/PGY/GY/MBK  
Print-Head (R) PM/M/BK/R/G/B

### Number of Nozzles

2,560 per Color; 30,720 Total

### Droplet Size

Uniform 4 Picoliter for All Colors

### Nozzle Pitch (Head Resolution)

Up to 1200 dpi

### Print-Head Swath

1.07 inch

### Print Resolution (Max.)

2400 x 1200 dpi

### Ink Type

LUCIA Ink (Pigment-based)

### Replacement Ink Tank

PFI-702 (700ml) or PFI-302 (330ml) for Bk/MBk/GY/PGY  
PFI-701 (700ml) or PFI-301 (330ml) for C/M/Y/PC/PM/R/G/B

### Colors

Cyan, Photo Cyan, Magenta, Photo Magenta, Yellow,  
Black, Matte Black, Red, Green, Blue, Gray, Photo Gray

### Ink Tank Shipped with Printer

12 Colors (Full 330ml Each Color)

### Ink Supply Method

Tubing System with Sub-Tanks for Continuous Ink Supply

### Nozzle Recovery System

Non-firing Nozzle Detection and Compensation

### Printer Controller

L-COA Controller

### Printer Memory

iPF9100: 640MB  
iPF8100: 384MB

### Media Feed

#### Roll Feed

One Roll, Front-Loading, Front Output

#### Cut Sheet

One Sheet, Front-Loading, Front Output

### Media Width

(Cut Sheet) 8" – 44" (iPF8100)  
– 60" (iPF9100)  
(Roll Feed) 10" – 44" (iPF8100)  
– 60" (iPF9100)

### Minimum Media Length

8" (203mm)

### Maximum Print Length

#### Manual Feed

63" (1.6m)

#### Roll Feed

59' (18m)\*

### Borderless Printing Width (Roll Media Only)

10", 14", 16", 24", 36", 42"  
B2 (20.28"/515mm), A1 (23.38"/594mm)  
A0 (33.11"/841mm), B0 (40.55"/1030mm)

### Media Cutter

User-replaceable Durable Rotary Blade (CT-06)

### Media Thickness

0.07mm–0.8mm (2.8mil–31.4mil)

### Media Core Sizes

2" (3" Core with Optional 3" Core Spool)

### Media Output

Automatically Winding Media Take-up Reel (iPF8100:  
Optional/9100: Standard), Basket (iPF9100: Optional/  
iPF8100: Standard)

### Printable Margins

#### Manual Feed (Top/Front)

Leading and Left/Right Edges: 0.20" (5mm),  
Trailing Edge: 0.90" (23mm)

#### Roll Feed

All Sides: 0.20" (5mm) or 0" for Borderless

### Maximum Media Roll Outer Diameter

5.9" (150mm)

### Built-in Hard Disk Capacity

80GB

### Bundled Software

#### Printing Software

Printer Driver 2007, Print Plug-in for Photoshop®,\*\*  
Print Plug-in for Digital Photo Professional, Printer Driver  
Extra Kit\* (Free Layout, imageRUNNER® Linking Function)

#### Applications

Digital Photo Front-Access\*\*  
PosterArtist 2007 (Optional)\*\*

#### Utilities

GARO Status Monitor with SMTP E-mail Printer Status  
Notification, Media Configuration Tool, Remote UI

### Printer Language

GARO (Canon Proprietary)

### Operating System<sup>■</sup>

Windows® 2000/XP/Windows Vista®  
Macintosh® OS 9/X

### Interface

#### Standard

USB 2.0; 10/100Base-T/TX

#### Optional

IEEE1394 (FireWire®)

### Acoustic Noise

#### Operation

51dB or Less

#### Standby

35dB or Less

### Acoustic Power (Operation and Standby)

6.7 Bels or Less

### Power Supply

AC 100–240V (50–60Hz)

### Power Consumption

#### Maximum

190W or less

#### Standby (100–120V)

5W or less

#### Power Off (Standby, 100–120V)

Less than 1W  
(Compliant with Executive Order)

### Certifications

#### Electrical Safety Regulations

UL (USA), C-UL (Canada), S mark (Argentina),  
CB certification (Others)

#### Electromagnetic Interference Regulations

FCC Class B (USA), IC Class B (Canada)

#### Environmental Certifications

ENERGY STAR® (World Wide), RoHS Directive,  
WEEE, Executive Order (USA)

### Operational Environment

#### Temperature

59–86 F° (15–30 C°)

#### Relative Humidity

10–80% (Condensation Free)

### Dimensions with Stand (H x W x D)

iPF9100: 45" x 90.5" x 30.2" (1144mm x 2299mm x 766mm)  
iPF8100: 45" x 74.5" x 38.4" (1144mm x 1893mm x 975mm)

### Weight with Stand

iPF9100: Approx. 362 lb. (162kg)  
iPF8100: Approx. 313 lb. (140kg)

### User-Replaceable Items

Ink Tanks  
Print-Head (PF-03)  
Maintenance Cartridge (MC-08)  
Durable Rotary Media Cutter (CT-06)

### Options

IEEE1394 Expansion Board (EB-05)  
Media Take-Up Unit (TU-06)-iPF8100  
Basket (BU-01)-iPF9100  
PosterArtist 2007  
iPF9100: 2" Core Roll Holder (RH2-63)  
iPF9100: 3" Core Roll Holder (RH3-63)  
iPF8100: 2" Core Roll Holder (RH2-43)  
iPF8100: 3" Core Roll Holder (RH3-43)

\* The maximum printable length varies depending on the application, OS, and RIP used. The maximum printable length from Printer Driver 2007 is 50 feet.

\*\* For Adobe Photoshop 6, 7, CS, CS2, running on Windows 2000/XP/Windows Vista 32-bit or Macintosh OS 9.1 or OS X

▲ Windows 2000/XP/Windows Vista

▲▲ Windows 2000/XP/Windows Vista 32-bit

■ For imagePROGRAF Printer Driver 2007. For printing from PostScript® applications such as Adobe Illustrator® or QuarkXPress™, please use a PostScript compatible RIP package. For a list of Canon recommended RIP packages, please consult with Canon Alliance and Industry Market program list of RIP vendors.

**Canon**  
image*ANYWARE*

1-800-OK-CANON

www.usa.canon.com

Canon U.S.A., Inc.  
One Canon Plaza  
Lake Success, NY 11042

As an ENERGY STAR® Partner, Canon U.S.A., Inc. has determined that these products meet the ENERGY STAR guidelines for energy efficiency. ENERGY STAR and the ENERGY STAR mark are registered U.S. marks. Adobe, Photoshop, PostScript, and Illustrator are registered trademarks of Adobe Systems Incorporated in the United States and/or other countries. Windows and Windows Vista are registered trademarks of Microsoft Corporation in the United States and/or other countries. Macintosh is a trademark of Apple Inc. QuarkXPress is a trademark of Quark, Inc. and all applicable affiliated companies, Reg. U.S. Pat. and Tm. Off. and in many other countries. CANON, IMAGEPROGRAF, EOS, and the GENUINE logo are registered trademarks and LUCIA is a trademark of Canon Inc. in the United States and may also be registered trademarks or trademarks in other countries. IMAGEANYWARE is a trademark of Canon. All referenced product names and other marks are trademarks of their respective owners.

All output images are simulated.

Specifications and availability subject to change without notice.

©2007 Canon U.S.A., Inc. All rights reserved.

0116W178  
1107-9100/8100-75M-LMC

  
LUCIA  
ink

  
L-COA

  
FINE  
Full-photolithography Inkjet  
Nozzle Engineering

  
ENERGY STAR

  
ENERGY STAR